

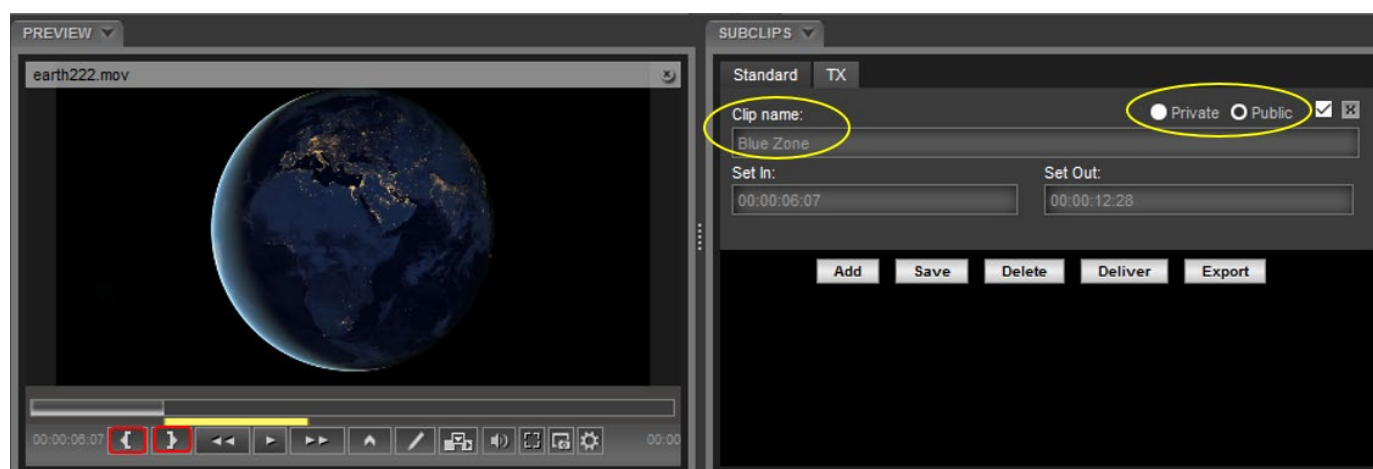
## How to create Subclips & Markers in eMAM Director interface?

eMAM supports both subclips and marker features which can be used for proxy editing workflows. The Subclips widget allows users to create a smaller clip from the original video. This widget is available only for video assets. This widget allows a user to mark one or more *Set-In* (start) and *Set-Out* (stop) points in a video file. These subclips can be dropped into a timeline for later editing in Adobe Premiere. The Marker widget allows you to add markers based on timecode with a description. This option will be available only for video and audio assets. Markers are used to identify important sound or action at a given point in a sequence or clip.

### Subclips

#### A. Add Subclips

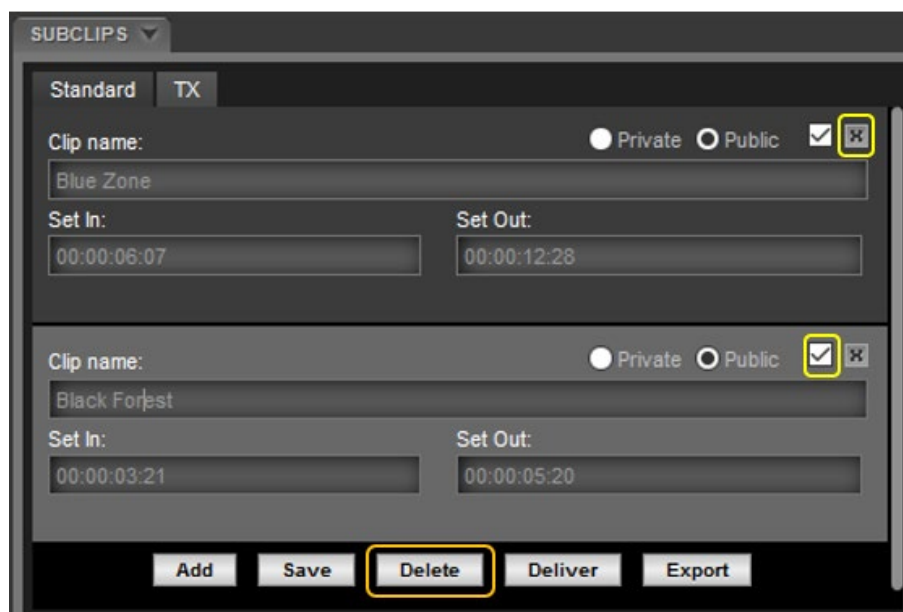
Follow the below steps to create subclips:



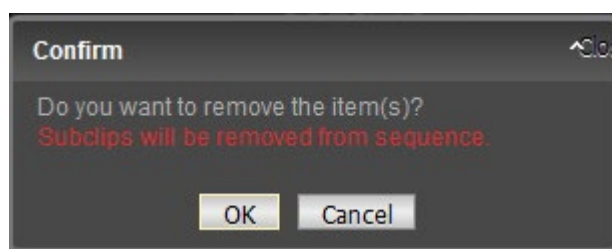
1. Login to eMAM Director interface and place Subclips widget adjacent to the Preview widget (*for easier view*) in the workspace.
2. In the Browse widget, click on the desired video asset to see its preview in the Preview player.
3. Now play the video and click on the *Set-In* '{' button and then choose the *Set-Out* point in the video with the '}' button.
4. The marked set in set out points will be indicated with a yellow line.
5. Time codes corresponding to the Set In & set Out points will automatically get displayed in the Subclips widget.
6. Enter subclip name.
7. Choose subclip access type as Public or Private.
8. Click on Save button to save the subclip.
9. Click on Add button to add another subclip and repeat steps from 3. to 8.

## B. Delete Subclips

You can easily delete one or more subclips just by clicking on the ‘X’ icon of each clip or by selecting each subclip using checkboxes and clicking on *Delete* button.

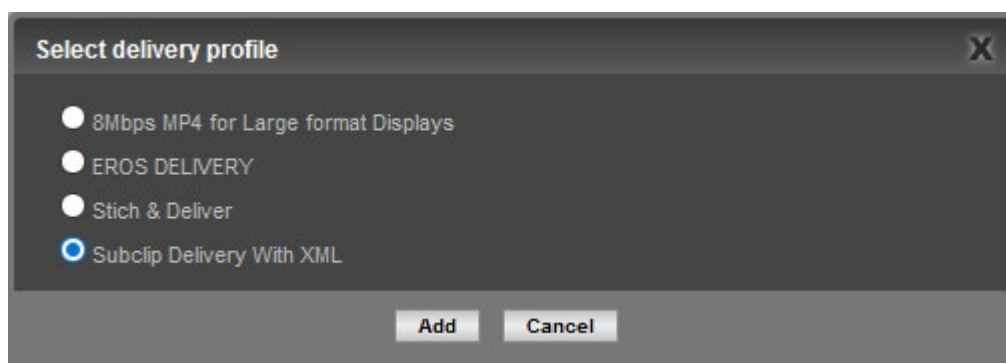


A confirmation box appears to confirm the delete action. Click OK.



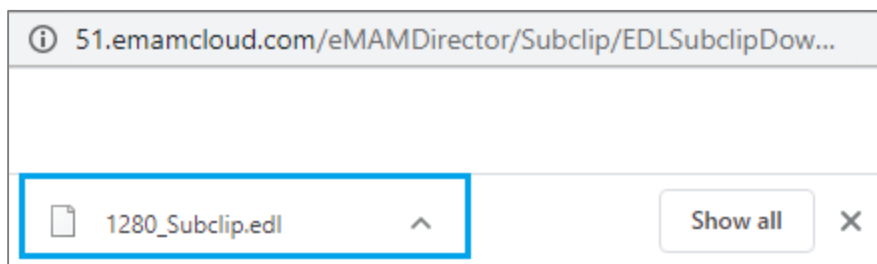
## C. Deliver Subclips

You can easily deliver the selected subclip(s) to the chosen destination in the selected format. eMAM will trigger the transcoding of the original/native video file and make a new version for delivery without affecting the original file. The user needs to select one of the available predefined delivery profiles and the subclip will be added to the delivery queue. A subclip must be saved before it can be delivered.



## D. Export Subclips


You have option to export subclips. Just click on *Export* button to export the XML code for the subclip.

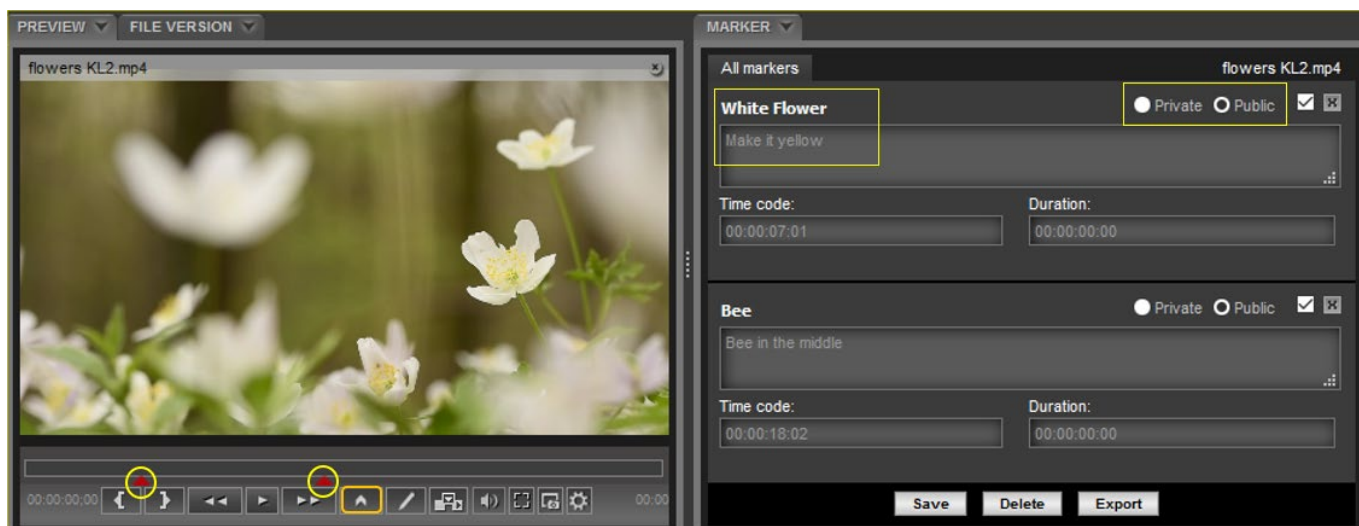


## Markers

### A. Add Markers

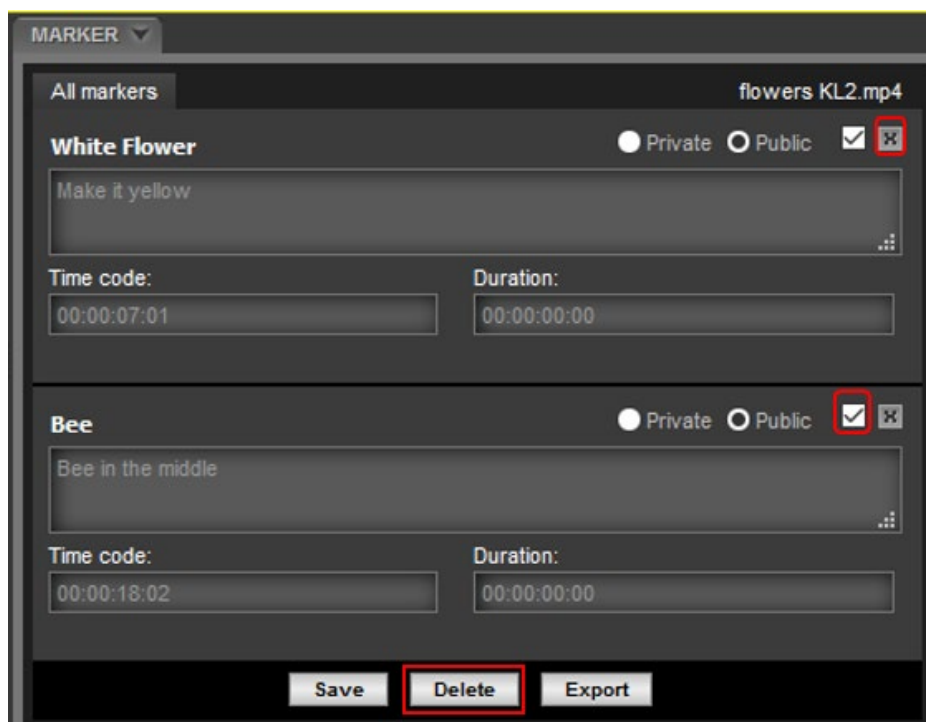
To add markers to video or audio assets, follow the steps below:

1. Login to eMAM Director interface and place Marker widget adjacent to the Preview widget (*for easier view*) in the workspace.
2. In the Browse widget, click on the desired video asset to see its preview in the Preview player.
3. Play the video or audio file and click on  icon from the preview window.
4. Time codes are set by the system in the marker widget based on the marker points. Clicking on a marker in the Marker widget will move the timeline to that marker point in the Preview widget.
5. Enter Marker name & Marker description.
6. Select access type as Private or Public.
7. Click on Save button to save the marker.

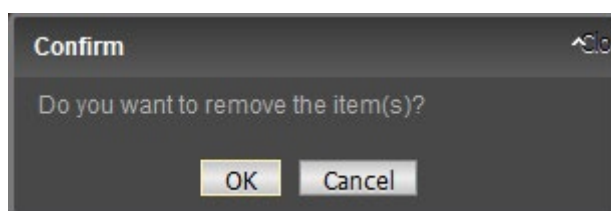


## B. Delete

You can also delete any marker created by using 'X' icon . To save or delete multiple markers, click on each respective checkbox, then click 'Delete' button.

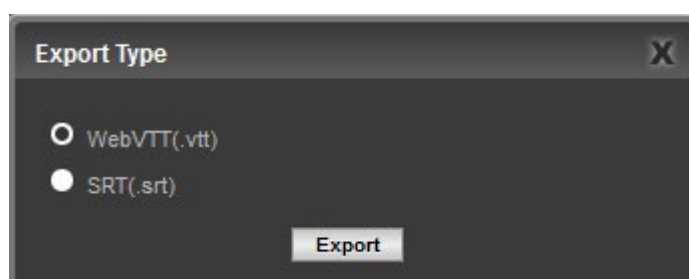


You will be prompted to confirm the delete operation. Click Ok.



## C. Export

Markers can also be exported as WebVTT (.vtt) format or SRT(.srt) format using Export button.



## Need Help

Please contact eMAM Support at [support@emamcloud.com](mailto:support@emamcloud.com)